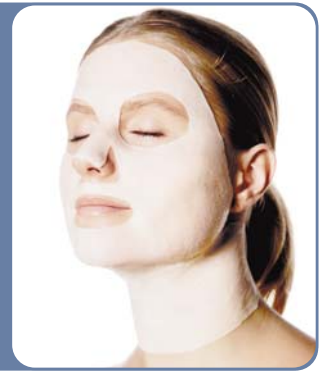


Anti-expression wrinkle mask

Code 116946E



1 General description

This mask is soaked with a gel that is full of active ingredients and specifically targets expression wrinkles

What are expression wrinkles?

They are wrinkles that form on areas of the face where the muscles are put under a great deal of strain:



1
Frontalis muscle
(horizontal lines
on the forehead)



2
Corrugator muscles
and pyramidal muscles
(lines between the eyebrows)



3
Orbicularis oculi muscle
(around the eyes,
or "crows' feet")



4
Levator muscles on the top lip and orbicularis oris
(around the mouth and above the lip)



An original mask for optimal effect

Non-woven, supple, fine and non adhesive, it fits the face perfectly like a second skin.

The base material

The base material is made of a soft white, ultra-supple cellulose derivative of plant origin. It is so safe that it can be used every day, even on the most sensitive areas of skin. Through a film-forming effect, the imperceptible loss of water from the surface layers of the skin is limited, leaving the skin smoothed and moisturized.

The base material can come in various cut-out shapes and be packaged in different types of pouch. (Aluminium, with one transparent side, etc.)

The gel

The gel gives an immediate feeling of freshness, is perfectly absorbed by the skin, and helps the active ingredients to penetrate the skin effectively.

2 Active ingredients

• Algae extract

Algae extract acts at 2 levels. Firstly, it acts on cell relaxation it is "skin-relaxing" – and therefore has a direct effect on expression wrinkles by acting on the nerve-muscle connection. Secondly, it acts on the rebuilding and cohesion of the components in the extracellular matrix; which by increasing the synthesis of collagen has the effect of filling out the skin.

• Extract of sea collagen

An active ingredient that moisturizes the outer layers of the skin. Film-forming. It promotes skin elasticity, tone and regeneration.

• Skin-relaxing peptide

This hexapeptide has an anti-wrinkle function. Its action is said to be "skin-relaxing"; it acts on the skin by inhibiting the passage of the information telling the muscles to contract, the effect of which is to limit expression wrinkles.

• Extract of beech tree buds

This active ingredient stimulates cellular respiration and skin regeneration.

3 Method of use

Application time:

15 minutes are enough!

The skin immediately receives and gains full benefit from everything it needs to become radiant, supple and soft again. For salon or home use, this original skincare product is consistent with a comfort and well-being approach, providing excellent relaxation and beauty-enhancing time.

Rinsing:

Remove the mask carefully and dab the skin. Then apply a skincare cream that acts in synergy with the mask and prolongs its effect for hours (age-defying cream).

Frequency of use:

choose your programme!

As a set programme of treatment with one application a day for a month, or in long-term use, applying once every three days, or once every now and then to perk up the skin.

Laboratoire Sicobel – MPP Division

Le Chênerond - 39 RN 7 - 69570 Dardilly - France

Telephone: + 33 (0)4 78 48 83 76 - Fax: + 33 (0)4 78 48 83 65 - Email: info@sicobel.com

Class 1 = fight against time

Anti-deep wrinkle mask

Code 116114I



1 General description

This mask is soaked with a gel that is full of active ingredients. It moisturizes the skin deep down, helps to combat free radicals, stimulates cell regeneration and improves skin micro-circulation. Deep wrinkles are reduced.

An original mask for optimal effect

Non-woven, supple, fine and non adhesive, it fits the face perfectly like a second skin.

The base material

The base material is made of a soft white, ultra-supple cellulose derivative of plant origin. It is so safe that it can be used every day, even on the most sensitive areas of skin. Through a film-forming effect, the imperceptible loss of water from the surface layers of the skin is limited, leaving the skin smoothed and moisturized.

The base material can come in various cut-out shapes and be packaged in different types of pouch. (Aluminium, with one transparent side, etc.)

The gel

The gel gives an immediate feeling of freshness, is perfectly absorbed by the skin, and helps the active ingredients to penetrate the skin effectively

2 Active ingredients.

• Glycerin

Moisturizing agent of natural origin

• Extract of beech tree buds

It has been demonstrated in vitro that extract of beech tree buds increases the consumption of oxygen by the cells, indicating a dynamization of the skin's metabolism and an increase in the intracellular energy reserve. In vivo, tests have highlighted a smoothing effect on the skin's micro-surface structure after 4 weeks of treatment. Extract of beech tree buds also improves moisturization.

• Peptides

With age, less collagen in the dermis seems to be one of the main reasons for wrinkle formation. Stimulating the fibroblasts to encourage them to synthesize more collagen is one of the potential techniques that can help to reduce wrinkles.

The pentapeptide used:

- is a micro-fragment of collagen

- initiates the stimulation of collagen synthesis

This active ingredient fills out the skin and improves its elasticity and tone.

3 Method of use

Application time:

15 minutes are enough!

The skin immediately receives and gains full benefit from everything it needs to become radiant, supple and soft again. For salon or home use, this original skincare product is consistent with a comfort and well-being approach, providing excellent relaxation and beauty-enhancing time.

Rinsing:

Remove the mask carefully and dab the skin

Then apply a skincare cream that acts in synergy with the mask and prolongs its effect.

Frequency of use:

choose your programme!

As a set programme of treatment with one application a day for a month, or in long-term use, applying once every three days, or once every now and then to perk up the skin.

Laboratoire Sicobel – MPP Division

Le Chênerond - 39 RN 7 - 69570 Dardilly - France

Telephone: + 33 (0)4 78 48 83 76 - Fax: + 33 (0)4 78 48 83 65 - Email: info@sicobel.com

Class 1 = fight against time

Helio Anti-Wrinkle Mask

Code 116892H



1 General description

This mask is soaked with a gel that is full of active ingredients. It moisturizes the skin deep down, helps to combat free radicals, improves skin micro-circulation and stimulates cell regeneration

What is dermatoheliosis?

This term covers skin aging phenomena linked to exposure to the sun's rays, such as an increase in the skin's fragility and deeper wrinkles.

An original mask for optimal effect

Non-woven, supple, fine and non adhesive, it fits the face perfectly like a second skin.

The base material

The base material is made of a soft white, ultra-supple cellulose derivative of plant origin. It is so safe that it can be used every day, even on the most sensitive areas of skin. Through a film-forming effect, the imperceptible loss of water from the surface layers of the skin is limited, leaving the skin smoothed and moisturized.

The base material can come in various cut-out shapes and be packaged in different types of pouch. (Aluminium, with one transparent side, etc.)

The gel

The gel gives an immediate feeling of freshness, is perfectly absorbed by the skin, and helps the active ingredients to penetrate the skin effectively.

2 Active ingredients

• Soya

Rich in isoflavones, soya has anti-aging properties and helps to reduce wrinkles.

• Vitamin E (tocopherol)

Vitamin E is a powerful natural anti-oxidant. It helps to reduce the damage caused by UV rays, has an anti-inflammatory effect and helps to reduce wrinkles.

• Beech tree buds

Rich in peptides, phyto-stimulines, flavonoids. This active ingredient stimulates the consumption of oxygen by the cells, stimulates the synthesis of keratinocytes and improves moisturization.

• Yam

This plant extract (*Dioscorea villosa*) helps to reduce wrinkles.

• Hyaluronic acid

This is a natural active ingredient that has very substantial moisturizing and film-forming properties.

3 Method of use

Application time:

15 minutes are enough!

The skin immediately receives and gains full benefit from everything it needs to become radiant, supple and soft again. For salon or home use, this original skincare product is consistent with a comfort and well-being approach, providing excellent relaxation and beauty-enhancing time

Rinsing:

Remove the mask carefully and dab the skin
Then apply a skincare cream that acts in synergy with the mask and prolongs its effect.

Frequency of use:

choose your programme!

As a set programme of treatment with one application a day for a month, or in long-term use, applying once every three days, or once every now and then to perk up the skin.

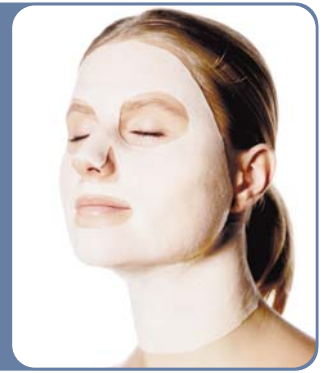
Laboratoire Sicobel – MPP Division

Le Chênerond - 39 RN 7 - 69570 Dardilly - France

Telephone: + 33 (0)4 78 48 83 76 - Fax: + 33 (0)4 78 48 83 65 - Email: info@sicobel.com

Mask with sea collagen

Code 122515A



1 General description

This mask is soaked with a gel that is full of active ingredients with moisturizing and highly-effective age-defying properties, and effectively combats the effects of skin aging. It increases skin tone and elasticity.

An original mask for optimal effect

Non-woven, supple, fine and non adhesive, it fits the face perfectly like a second skin

The base material

The base material is made of a soft white, ultra-supple cellulose derivative of plant origin. It is so safe that it can be used every day, even on the most sensitive areas of skin. Through a film-forming effect, the imperceptible loss of water from the surface layers of the skin is limited, leaving the skin smoothed and moisturized.

The base material can come in various cut-out shapes and be packaged in different types of pouch. (Aluminium, with one transparent side, etc.)

The gel

The gel gives an immediate feeling of freshness, is perfectly absorbed by the skin, and helps the active ingredients to penetrate the skin effectively.

Laboratoire Sicobel innovates with a double-sided mask and presents a dual skincare product:

This film-forming mask helps water to stay in the surface layers of the epidermis. Well-wrapped up beneath this protective coat, the skin becomes highly permeable to active substances. It is then able to gorge itself with a large quantity of active ingredients in record time, which is why the results are both visible and immediate.

2 Active ingredients

• Glycerin

Glycerin is a plant-derived agent that moisturizes the upper layers of the epidermis. This molecule is capable of retaining a large quantity of water, thus limiting the imperceptible loss of water from the skin, and makes the gel feel soft.

• Sea collagen

The fibroblasts in the dermis are cells that specialize in the manufacture of collagen and elastin fibres. Collagen performs a number of functions in the skin; it provides support, elasticity, suppleness and moisturization. Its structure, made up of fibres arranged in bands, is responsible for tissue cohesion and strength.

The sea collagen used is said to be native because it is the form that is most similar to the structure of collagen newly synthesized in situ in the body, and it is also the most active form for skincare cosmetic applications.

Collagen has a strong moisturizing effect on the surface layers of the epidermis, increases skin tone and elasticity, and also smooths out the skin's surface structure. It has the ability to restore the skin surface to its original order, and also has an age-defying and film-forming effect

3 Method of use

Application time:

15 minutes are enough!

The skin immediately receives and gains full benefit from everything it needs to become radiant, supple and soft again. For salon or home use, this original skincare product is consistent with a comfort and well-being approach, providing excellent relaxation and beauty-enhancing time.

Rinsing:

Remove the mask carefully and dab the skin

Then apply a skincare cream that acts in synergy with the mask and prolongs its effect for hours.

Frequency of use:

choose your programme!

As a set programme of treatment with one application a day for a month, or in long-term use, applying once every three days, or once every now and then to perk up the skin

Laboratoire Sicobel – MPP Division

Le Chênerond - 39 RN 7 - 69570 Dardilly - France

Telephone: + 33 (0)4 78 48 83 76 - Fax: + 33 (0)4 78 48 83 65 - Email: info@sicobel.com

Class 1 = fight against time, age-defying and firmness skincare

Tensor and Firmness Mask

Code 124735F



1 General description

This mask is soaked with a gel that is full of active ingredients. It moisturizes the skin deep down, improves skin tone and elasticity, and firms the skin.

The high concentration (20%) of active ingredients in this tensor and firmness mask makes this mask extremely effective

An original mask for optimal effect

Non-woven, supple, fine and non adhesive, it fits the face perfectly like a second skin.

The base material

The base material is made of a soft white, ultra-supple cellulose derivative of plant origin. It is so safe that it can be used every day, even on the most sensitive areas of skin. Through a film-forming effect, the imperceptible loss of water from the surface layers of the skin is limited, leaving the skin smoothed and moisturized.

The base material can come in various cut-out shapes and be packaged in different types of pouch. (Aluminium, with one transparent side, etc.)

The gel

The gel gives an immediate feeling of freshness, is perfectly absorbed by the skin, and helps the active ingredients to penetrate the skin effectively.

The skin is radiant, soft and firm again

2 Active ingredients

These are plant-derived tensors from the heart of Africa and Latin America that help to combat the harmful effects of gravity on the skin.

• Kigelia Africana

Certain parts of the Kigelia Africana tree have been used for decades in African medicine to treat a variety of ailments. Its fruit is a symbol of wealth, and its pulp is traditionally used to firm and develop the bust. The peptides contained in this extract have both an immediate mechanical tensor effect on the skin, and a more elaborate cell reactivation effect, which helps to improve skin firmness

• Quillaja Saponaria

Powdered bark from the Quillaja Saponaria Molina tree has emulsifying and humectant properties due to the saponins it contains. In the pharmaceutical field, this extract is used in the adjuvant treatment of dermatological conditions for its emollient and anti-pruritic effect. Titrated with rutin and generally rich in flavonoids, containing reducing sugars in the form of glucose, galactose, xylose, and rhamnose contributing to the formation of extracellular polysaccharides, Quillaja extract is an excellent moisturizing, film-forming and tensor agent.

3 Method of use

Application time:

15 minutes are enough!

The skin immediately receives and gains full benefit from everything it needs to become radiant, supple and soft again. For salon or home use, this original skincare product is consistent with a comfort and well-being approach, providing excellent relaxation and beauty-enhancing time..

Rinsing:

Remove the mask carefully and dab the skin
Then apply a skincare cream that acts in synergy with the mask and prolongs its effect for hours (age-defying cream).

Frequency of use:

choose your programme!

As a set programme of treatment with one application a day for a month, or in long-term use, applying once every three days, or once every now and then to perk up the skin.

Laboratoire Sicobel – MPP Division

Le Chênerond - 39 RN 7 - 69570 Dardilly - France

Telephone: + 33 (0)4 78 48 83 76 - Fax: + 33 (0)4 78 48 83 65 - Email: info@sicobel.com

Class 1 = fight against time, age-defying

Comprehensive age-defying, firmness, anti-wrinkle and radiance-boosting mask

Code 1247801



1 General description

This comprehensive skincare product is intended to combat skin aging by targeting firmness, wrinkles and radiance

The active ingredients in this mask help to protect the skin against the oxidative stress caused by harmful external factors. Its re-energizing activity gives our cells new vigour: it strengthens their natural system of protection, and at the same time, regenerates their energy potential. In combating the inevitable aging caused by time, it also revives the complexion and makes the skin radiant, youthful and firm again

An original mask for optimal effect

Non-woven, supple, fine and non adhesive, it fits the face perfectly like a second skin

The base material

The base material is made of a soft white, ultra-supple cellulose derivative of plant origin. It is so safe that it can be used every day, even on the most sensitive areas of skin. Through a film-forming effect, the imperceptible loss of water from the surface layers of the skin is limited, leaving the skin smoothed and moisturized.

The base material can come in various cut-out shapes and be packaged in different types of pouch. (Aluminium, with one transparent side, etc.)

The gel

The gel gives an immediate feeling of freshness, is perfectly absorbed by the skin, and helps the active ingredients to penetrate the skin effectively.

Laboratoire Sicobel innovates with a double-sided mask and presents a dual skincare product: This film-forming mask helps water to stay in the surface layers of the epidermis. Well-wrapped up beneath this protective coat, the skin becomes highly permeable to active substances. It is then able to gorge itself with a large quantity of active ingredients in record time, which is why the results are both visible and immediate.

2 Active ingredients

• Wheat proteins (Tone and elasticity)

Plant-derived tensor. This active ingredient forms a smooth, soft, elastic and cohesive film on the skin, and improves skin tone and radiance.

• Beech tree buds (Moisturization, energy and firmness)

Increase in the consumption of oxygen by the cells, dynamization of the skin's metabolism and increase in the intracellular energy reserve. Improvement in skin moisturization

• Sea collagen (Stimulation of collagen, synthesis Moisturizer, Film-forming, anti-wrinkle)

Collagen has a strong moisturizing effect on the surface layers of the epidermis, increases skin tone and elasticity, and also smoothes out the skin's surface structure. It has the ability to restore the skin surface to its original order, and also has an age-defying and film-forming effect

• Hyaluronic acid (Long-lasting moisturizer, restructuring and tensor effect)

Hyaluronic acid moisturizes the skin deep down, limits the imperceptible loss of water and promotes skin resurfacing.

• Glycoproteins (Energy-giving, anti-wrinkle)

A growth stimulator that promotes cell multiplication and cell metabolism

• Glycerin and sorbitol (Long-term moisturization)

Natural molecules that retain water in the skin

3 Method of use

Application time:

15 minutes are enough!

The skin immediately receives and gains full benefit from everything it needs to become radiant, supple and soft again. For salon or home use, this original skincare product is consistent with a comfort and well-being approach, providing excellent relaxation and beauty-enhancing time.

Rinsing:

Remove the mask carefully and dab the skin with a toner.

Then apply a skincare cream that acts in synergy with the mask and prolongs its effect for hours.

Frequency of use:

choose your programme!

As a set programme of treatment with one application a day for a month, or in long-term use, applying once every three days, or once every now and then to perk up the skin.

Laboratoire Sicobel – MPP Division

Le Chênerond - 39 RN 7 - 69570 Dardilly - France

Telephone: + 33 (0)4 78 48 83 76 - Fax: + 33 (0)4 78 48 83 65 - Email: info@sicobel.com

Class 1 = Fight against time, age-defying

Re-energizing mask

Code 126924I



1 General description

The skin is subjected to all kinds of harmful external factors such as pollution and tobacco, and can end up tired and strained.

The active ingredients in this mask help to protect the skin against the oxidative stress caused by harmful external factors. Its re-energizing activity gives our cells new vigour; it strengthens their natural system of protection and at the same time regenerates their energy potential. In combating the inevitable aging caused by time, it also revives the complexion and makes the skin radiant, youthful and firm again.

An original mask for optimal effect. Non-woven, supple, fine and non adhesive, it fits the face perfectly like a second skin

The base material

The base material is made of a soft white, ultra-supple cellulose derivative of plant origin. It is so safe that it can be used every day, even on the most sensitive areas of skin. Through a film-forming effect, the imperceptible loss of water from the surface layers of the skin is limited, leaving the skin smoothed and moisturized.

The base material can come in various cut-out shapes and be packaged in different types of pouch. (Aluminium, with one transparent side, etc.)

The gel

The gel gives an immediate feeling of freshness, is perfectly absorbed by the skin, and helps the active ingredients to penetrate the skin effectively.

Laboratoire Sicobel innovates with a double-sided mask and presents a dual skincare product:

This film-forming mask helps water to stay in the surface layers of the epidermis. Well-wrapped up beneath this protective coat, the skin becomes highly permeable to active substances. It is then able to gorge itself with a large quantity of active ingredients in record time, which is why the results are both visible and immediate.

2 Active ingredients

• Quillaja and Kigelia

Plant-derived tensors drawn from the heart of Africa and Latin America. Certain parts of the Kigelia Africana tree have been used for decades in African medicine to treat a variety of ailments. The peptides contained in this extract have both a mechanical tensor effect on the skin, and a more elaborate cell reactivation effect.

Powdered bark from the Quillaja Saponaria Molina tree has emulsifying and humectant properties due to the saponins it contains. Titrated with rutin and generally rich in flavonoids, containing reducing sugars in the form of glucose, galactose, xylose, and rhamnose contributing to the formation of extracellular polysaccharides, Quillaja extract is an excellent moisturizer.

• Walnut extract

A dynamic active ingredient which protects the cell's anti-oxidant pool and also has bio-stimulant properties whose benefits have been proven. This plant-based active ingredient results from the selective extraction of the walnut's hydrophilic compounds. Chemical analysis of these compounds has revealed that they are particularly rich in:

- Sodium phytate, a strong chelating agent capable of preventing the oxidation of biomolecules and that has anti-inflammatory properties,
- Hydrolysable tannin-type polyphenols (gallotannins including ellagitanins), consolidating the properties of sodium phytate by trapping formed free radicals,

? Oligopeptides and proteins, free amino acids, especially aspartic acid, glutamic acid and arginine, sugars, minerals and trace elements, B-group hydrosoluble vitamins (B6, B3, and B5).

3 Method of use

Application time:

15 minutes are enough!

The skin immediately receives and gains full benefit from everything it needs to become radiant, supple and soft again. For salon or home use, this original skincare product is consistent with a comfort and well-being approach, providing excellent relaxation and beauty-enhancing time.

Rinsing:

Remove the mask carefully and dab the skin with a toner. Then apply a skincare cream that acts in synergy with the mask and prolongs its effect for hours.

Frequency of use:

choose your programme!

As a set programme of treatment with one application a day for a month, or in long-term use, applying once every three days, or once every now and then to perk up the skin.

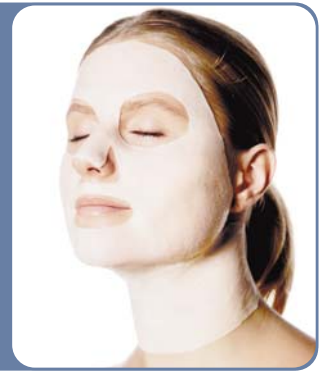
Laboratoire Sicobel – MPP Division

Le Chênepond - 39 RN 7 - 69570 Dardilly - France

Telephone: + 33 (0)4 78 48 83 76 - Fax: + 33 (0)4 78 48 83 65 - Email: info@sicobel.com

Fresh moisturizing mask

Code 22515H



1 General description

This mask is soaked with a gel full of active ingredients that moisturize dry skins deep down.

An original mask for optimal effect
Non-woven, supple, fine and non adhesive, it fits the face perfectly like a second skin.

The base material

The base material is made of a soft white, ultra-supple cellulose derivative of plant origin. It is so safe that it can be used every day, even on the most sensitive areas of skin. Through a film-forming effect, the imperceptible loss of water from the surface layers of the skin is limited, leaving the skin smoothed and moisturized.

The base material can come in various cut-out shapes and be packaged in different types of pouch. (Aluminium, with one transparent side, etc.)

The gel

The gel gives an immediate feeling of freshness, is perfectly absorbed by the skin, and helps the active ingredients to penetrate the skin effectively.

Laboratoire Sicobel innovates with a double-sided mask and presents a dual skincare product:

This film-forming mask helps water to stay in the surface layers of the epidermis. Well-wrapped up beneath this protective coat, the skin becomes highly permeable to active substances. It is then able to gorge itself with a large quantity of active ingredients in record time, which is why the results are both visible and immediate.

2 Active ingredients

• Glycerol

Glycerol is a molecule derived from the plant kingdom. It is an agent that helps to moisturize the upper layers of the epidermis because it is capable of retaining several times its own weight in water and thus limits the imperceptible loss of water from the epidermis. This active ingredient attaches itself to the surface of the skin to create a soft and lasting moisturizing film. It nourishes and softens the epidermis and makes the skin more beautiful. This ingredient is of natural origin and belongs to the carbohydrate family. It is naturally eliminated by the skin

• Sea extract

The sea extract used in this mask is a moisturizing and film-forming active ingredient. It is rich in collagen and essential amino acids. In our dermis, there are cells called fibroblasts that specialize in the manufacture of collagen and elastin fibres. Collagen performs a number of functions in the skin; it provides support, elasticity, suppleness and moisturization. Its structure, made up of fibres arranged in bands, is responsible for tissue cohesion and strength. The sea extract has a strong moisturizing effect on the surface layers of the epidermis and increases skin tone and elasticity.

3 Method of use

Application time:

15 minutes are enough!

The skin immediately receives and gains full benefit from everything it needs to become radiant, supple and soft again. For salon or home use, this original skincare product is consistent with a comfort and well-being approach, providing excellent relaxation and beauty-enhancing time.

Rinsing:

Remove the mask carefully and dab the skin with a toner.

Then apply a skincare cream that acts in synergy with the mask and prolongs its effect for hours.

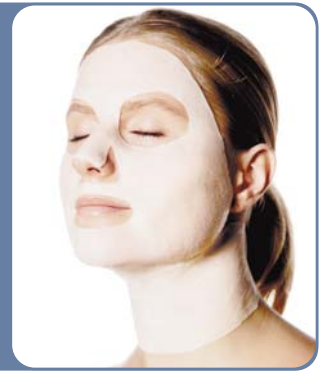
Frequency of use:

choose your programme!

As a set programme of treatment with one application a day for a month, or in long-term use, applying once every three days, or once every now and then to perk up the skin.

Anti-Redness Mask

Code 33790R



1 General description

This mask is soaked with a gel that is full of active ingredients. It moisturizes the skin deep down, improves skin micro-circulation and helps facial redness to fade.

An original mask for optimal effect

Non-woven, supple, fine and non adhesive, it fits the face perfectly like a second skin.

The base material

The base material is made of a soft white, ultra-supple cellulose derivative of plant origin. It is so safe that it can be used every day, even on the most sensitive areas of skin. Through a film-forming effect, the imperceptible loss of water from the surface layers of the skin is limited, leaving the skin smoothed and moisturized.

The base material can come in various cut-out shapes and be packaged in different types of pouch. (Aluminium, with one transparent side, etc.)

The gel

The gel gives an immediate feeling of freshness, is perfectly absorbed by the skin, and helps the active ingredients to penetrate the skin effectively.

The phlebotonic and anti-inflammatory active ingredients decongest the skin around the eyes, resulting in a brighter, more wide-awake look

2 Active ingredients

• Horse Chestnut Extract

This active ingredient has excellent phlebotonic and anti-inflammatory properties, and also helps the body fight against free radicals. It is used for its decongestive, soothing and phlebotonic properties. The aescin and flavonoids in its seeds help to improve the tone and strength of the capillaries

• Elderberry extract

This active ingredient tackles the problem of water retention and helps the body to eliminate water, toxins and metabolites.

• Ginkgo biloba

Ginkgo Biloba is well-known for its beneficial effect on the blood microcirculation system and for its anti-free radical properties.

3 Method of use

Application time:

15 minutes are enough!

The skin immediately receives and gains full benefit from everything it needs to become radiant, supple and soft again. For salon or home use, this original skincare product is consistent with a comfort and well-being approach, providing excellent relaxation and beauty-enhancing time.

Rinsing:

Remove the mask carefully and dab the skin.

Then apply a skincare cream that acts in synergy with the mask and prolongs its effect for hours (anti-redness cream or moisturizing lotion)

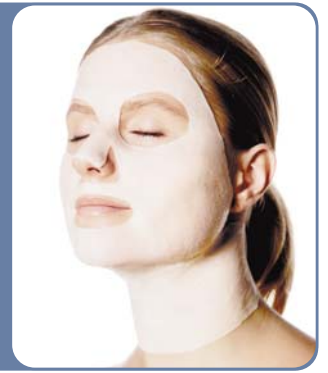
Frequency of use:

choose your programme!

As a set programme of treatment with one application a day for a month, or in long-term use, applying once every three days, or once every now and then to perk up the skin.

Lightening Mask

Code 35133W



1 General description

The lightening mask makes all types of skin – Asian, black and white – more radiant. It brightens up the complexion and helps to combat pigment spots.

An original mask for optimal effect

Non-woven, supple, fine and non adhesive, it fits the face perfectly like a second skin.

The base material

The base material is made of a soft white, ultra-supple cellulose derivative of plant origin. It is so safe that it can be used every day, even on the most sensitive areas of skin. Through a film-forming effect, the imperceptible loss of water from the surface layers of the skin is limited, leaving the skin smoothed and moisturized.

The base material can come in various cut-out shapes and be packaged in different types of pouch. (Aluminium, with one transparent side, etc.)

The gel

The gel gives an immediate feeling of freshness, is perfectly absorbed by the skin, and helps the active ingredients to penetrate the skin effectively.

Laboratoire Sicobel innovates with a double-sided mask and presents a dual skincare product:

This film-forming mask helps water to stay in the surface layers of the epidermis. Well-wrapped up beneath this protective coat, the skin becomes highly permeable to active substances. It is then able to gorge itself with a large quantity of active ingredients in record time, which is why the results are both visible and immediate.

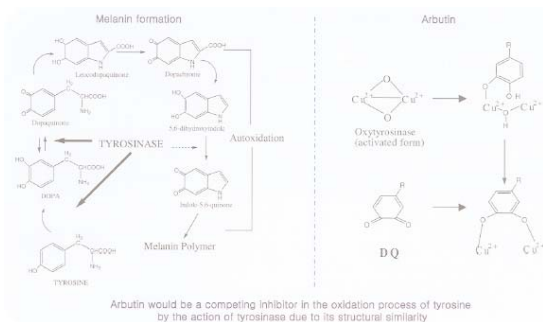
2 Active ingredients

• Arbutin

This active ingredient is obtained from the aerial parts of the Bearberry (arctophylos uva ursi) by aqueous extraction, fractional recrystallization and filtering through activated carbon.

Arbutin is intended to treat pigment spots and to lighten the skin, as it has a strong inhibiting effect on the action of tyrosinase, an enzyme involved in the synthesis of melanin, which is the pigment responsible for skin colour.

A summary of the action of arbutin is given below:



3 Method of use

Application time:

15 minutes are enough!

The skin immediately receives and gains full benefit from everything it needs to become radiant, supple and soft again. For salon or home use, this original skincare product is consistent with a comfort and well-being approach, providing excellent relaxation and beauty-enhancing time

Rinsing:

Remove the mask carefully and dab the skin with a toner.

Then apply a skincare cream that acts in synergy with the mask and prolongs its effect for hours.

Frequency of use:

choose your programme!

As a set programme of treatment with one application a day for a month, or in long-term use, applying once every three days, or once every now and then to perk up the skin..

Class 3 = specific treatment skincare

Purifying Mask. Acne-prone skin

Code 354055



1 General description

This mask is soaked with a gel that is full of active ingredients and helps to regulate acne-prone skins.

An original mask for optimal effect

Non-woven, supple, fine and non adhesive, it fits the face perfectly like a second skin.

The base material

The base material is made of a soft white, ultra-supple cellulose derivative of plant origin. It is so safe that it can be used every day, even on the most sensitive areas of skin. Through a film-forming effect, the imperceptible loss of water from the surface layers of the skin is limited, leaving the skin smoothed and moisturized.

The base material can come in various cut-out shapes and be packaged in different types of pouch. (Aluminium, with one transparent side, etc.)

The gel

The gel gives an immediate feeling of freshness, is perfectly absorbed by the skin, and helps the active ingredients to penetrate the skin effectively.

Laboratoire Sicobel innovates with a double-sided mask and presents a dual skincare product:

This film-forming mask helps water to stay in the surface layers of the epidermis. Well-wrapped up beneath this protective coat, the skin becomes highly permeable to active substances. It is then able to gorge itself with a large quantity of active ingredients in record time, which is why the results are both visible and immediate.

2 Active ingredients

A composition based on Iris extract and zinc salt that draws its strength from the combined effects of its components.

Iris is an agent that fights against the symptoms and physical signs of acne by means of its bacteriostatic, anti-inflammatory and astringent action, and reduces the excess secretion of sebum.

Zinc salt, which is routinely used in dermatology especially with respect to acne-prone skins, is well-known for its antiseptic properties.

3 Method of use

Application time:

15 minutes are enough!

The skin immediately receives and gains full benefit from everything it needs to become radiant, supple and soft again. For salon or home use, this original skincare product is consistent with a comfort and well-being approach, providing excellent relaxation and beauty-enhancing time.

Rinsing:

Remove the mask carefully and dab the skin with a toner.

Then apply a skincare cream that acts in synergy with the mask and prolongs its effect for hours. .

Frequency of use:

choose your programme!

As a set programme of treatment with one application a day for a month, or in long-term use, applying once every three days

Laboratoire Sicobel – MPP Division

Le Chênerond - 39 RN 7 - 69570 Dardilly - France

Telephone: + 33 (0)4 78 48 83 76 - Fax: + 33 (0)4 78 48 83 65 - Email: info@sicobel.com

Radiance Boosting Mask

Code 42515Ec



1 General description

This mask is soaked with a gel that is full of active ingredients. It moisturizes the skin deep down, improves skin tone and boosts the radiance.

An original mask for optimal effect

Non-woven, supple, fine and non adhesive, it fits the face perfectly like a second skin

The base material

The base material is made of a soft white, ultra-supple cellulose derivative of plant origin. It is so safe that it can be used every day, even on the most sensitive areas of skin. Through a film-forming effect, the imperceptible loss of water from the surface layers of the skin is limited, leaving the skin smoothed and moisturized.

The base material can come in various cut-out shapes and be packaged in different types of pouch. (Aluminium, with one transparent side, etc.)

The gel

The gel gives an immediate feeling of freshness, is perfectly absorbed by the skin, and helps the active ingredients to penetrate the skin effectively.

Laboratoire Sicobel innovates with a double-sided mask and presents a dual skincare product:

This film-forming mask helps water to stay in the surface layers of the epidermis. Well-wrapped up beneath this protective coat, the skin becomes highly permeable to active substances. It is then able to gorge itself with a large quantity of active ingredients in record time, which is why the results are both visible and immediate.

2 Active ingredients

• Glycerin

Glycerin is a plant-derived agent that moisturizes the upper layers of the epidermis. This molecule is capable of retaining a large quantity of water, thus limiting the imperceptible loss of water from the skin, and makes the gel feel soft.

• Sea extract

The fibroblasts in the dermis are cells that specialize in the manufacture of collagen and elastin fibres. Collagen performs a number of functions in the skin; it provides support, elasticity, suppleness and moisturization. Its structure, made up of fibres arranged in bands, is responsible for tissue cohesion and strength.

The sea collagen used is said to be native because it is the form that is most similar to the structure of collagen newly synthesized in situ in the body, and it is also the most active form for skincare cosmetic applications.

Collagen has a strong moisturizing effect on the surface layers of the epidermis, increases skin tone and elasticity, and also smooths out the skin's surface structure. It has the ability to restore the skin surface to its original order, and also has an age-defying and film-forming effect

3 Method of use

Application time:

15 minutes are enough!

The skin immediately receives and gains full benefit from everything it needs to become radiant, supple and soft again. For salon or home use, this original skincare product is consistent with a comfort and well-being approach, providing excellent relaxation and beauty-enhancing time.

Rinsing:

Remove the mask carefully and dab the skin
Then apply a skincare cream that acts in synergy with the mask and prolongs its effect for hours.

Frequency of use:

choose your programme!

As a set programme of treatment with one application a day for a month, or in long-term use, applying once every three days, or once every now and then to perk up the skin

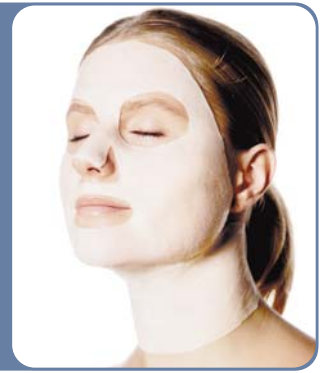
Laboratoire Sicobel – MPP Division

Le Chênerond - 39 RN 7 - 69570 Dardilly - France

Telephone: + 33 (0)4 78 48 83 76 - Fax: + 33 (0)4 78 48 83 65 - Email: info@sicobel.com

Anti-stress Mask

Code 44722As



1 General description

This mask is soaked with a gel that is full of active ingredients. It moisturizes the skin deep down, soothes it and helps you wind down. A moment of sheer relaxation.

An original mask for optimal effect

Non-woven, supple, fine and non adhesive, it fits the face perfectly like a second skin.

The base material

The base material is made of a soft white, ultra-supple cellulose derivative of plant origin. It is so safe that it can be used every day, even on the most sensitive areas of skin. Through a film-forming effect, the imperceptible loss of water from the surface layers of the skin is limited, leaving the skin smoothed and moisturized.

The base material can come in various cut-out shapes and be packaged in different types of pouch. (Aluminium, with one transparent side, etc.)

The gel

The gel gives an immediate feeling of freshness, is perfectly absorbed by the skin, and helps the active ingredients to penetrate the skin effectively.

Laboratoire Sicobel innovates with a double-sided mask and presents a dual skincare product:

This film-forming mask helps water to stay in the surface layers of the epidermis. Well-wrapped up beneath this protective coat, the skin becomes highly permeable to active substances. It is then able to gorge itself with a large quantity of active ingredients in record time, which is why the results are both visible and immediate.

2 Active ingredients

• Euphrasia Extract

Euphrasia officinalis, the eyebright, is a small flower-bearing herbaceous plant measuring two to thirty centimetres high. The Greek word Euphrasia means "joy", a feeling experienced when this extract is used (as it has been since the Middle Ages) in decoctions and compresses on irritated, watery eyes. The aerial parts of the plant are used for their concentration of flavonoids, tannin (euphrasiotannic acid) and glucoside derivatives. These active ingredients inhibit the inflammation process and its accompanying outbursts of free radicals..

• Cucumis sativus

Fresh plant cells from the cucumber (Cucumis sativus), a member of the cucurbitaceous family, are already widely used in cosmetology.

These molecules have an effect on the processes of inflammation and curb damage to the tissues caused by outside attacks on sensitive, stressed skin.

In this composition, the synergy of emollient, anti-inflammatory and soothing active ingredients results in a truly soothing and de-stressing effect.

3 Method of use

Application time:

15 minutes are enough!

The skin immediately receives and gains full benefit from everything it needs to become radiant, supple and soft again. For salon or home use, this original skincare product is consistent with a comfort and well-being approach, providing excellent relaxation and beauty-enhancing time.

Rinsing:

Remove the mask carefully and dab the skin with a toner. Then apply a skincare cream that acts in synergy with the mask and prolongs its effect for hours.

Frequency of use:

choose your programme!

As a set programme of treatment with one application a day for a month, or in long-term use, applying once every three days, or once every now and then to perk up the skin.

Laboratoire Sicobel – MPP Division

Le Chênerond - 39 RN 7 - 69570 Dardilly - France

Telephone: + 33 (0)4 78 48 83 76 - Fax: + 33 (0)4 78 48 83 65 - Email: info@sicobel.com

Anti-pollution, detoxifying mask

Code 46924Ap



1 General description

The skin is subjected to all kinds of harmful external factors such as pollution and tobacco. It needs regular detoxifying care.

The active ingredients in this mask help to protect the skin against the oxidative stress caused by harmful external factors. Its re-energizing activity gives our cells new vigour; it strengthens their natural system of protection and at the same time regenerates their energy potential. In combating the inevitable aging caused by time, it also revives the complexion and makes the skin radiant, youthful and firm again.

An original mask for optimal effect

Non-woven, supple, fine and non adhesive, it fits the face perfectly like a second skin.

The base material

The base material is made of a soft white, ultra-supple cellulose derivative of plant origin. It is so safe that it can be used every day, even on the most sensitive areas of skin. Through a film-forming effect, the imperceptible loss of water from the surface layers of the skin is limited, leaving the skin smoothed and moisturized.

The base material can come in various cut-out shapes and be packaged in different types of pouch. (Aluminium, with one transparent side, etc.)

The gel

The gel gives an immediate feeling of freshness, is perfectly absorbed by the skin, and helps the active ingredients to penetrate the skin effectively.

Laboratoire Sicobel innovates with a double-sided mask and presents a dual skincare product: This film-forming mask helps water to stay in the surface layers of the epidermis. Well-wrapped up beneath this protective coat, the skin becomes highly permeable to active substances. It is then able to gorge itself with a large quantity of active ingredients in record time, which is why the results are both visible and immediate.

2 Active ingredients

• Quillaja and Kigelia

Plant-derived tensors drawn from the heart of Africa and Latin America. Certain parts of the Kigelia Africana tree have been used for decades in African medicine to treat a variety of ailments. The peptides contained in this extract have both a mechanical tensor effect on the skin, and a more elaborate cell reactivation effect.

Powdered bark from the Quillaja Saponaria Molina tree has emulsifying and humectant properties due to the saponins it contains. Titrated with rutin and generally rich in flavonoids, containing reducing sugars in the form of glucose, galactose, xylose, and rhamnose contributing to the formation of extracellular polysaccharides, Quillaja extract is an excellent moisturizer

• Walnut Extract

A dynamic active ingredient which protects the cell's anti-oxidant pool and also has bio-stimulant properties whose benefits have been proven. This plant-based active ingredient results from the selective extraction of the walnut's hydrophilic compounds. Chemical analysis of these compounds has revealed that they are particularly rich in:

- Sodium phytate, or myo-inositol hexaphosphate (InsP6), a strong chelating agent capable of preventing the oxidation of biomolecules and that has anti-inflammatory properties,
- Hydrolysable tannin-type polyphenols (gallotannins including ellagitannins), consolidating the properties of sodium phytate by trapping formed free radicals through the scavenger effect,
- Oligopeptides and proteins, free amino acids, especially aspartic acid, glutamic acid and arginine, sugars, minerals and trace elements, B-group hydrosoluble vitamins (B6, B3, and B5).

3 Method of use

Application time:

15 minutes are enough!

The skin immediately receives and gains full benefit from everything it needs to become radiant, supple and soft again. For salon or home use, this original skincare product is consistent with a comfort and well-being approach, providing excellent relaxation and beauty-enhancing time.

Rinsing:

Remove the mask carefully and dab the skin with a toner. Then apply a skincare cream that acts in synergy with the mask and prolongs its effect for hours.

Frequency of use:

choose your programme!

As a set programme of treatment with one application a day for a month, or in long-term use, applying once every three days, or once every now and then to perk up the skin

Laboratoire Sicobel – MPP Division

Le Chênepond - 39 RN 7 - 69570 Dardilly - France

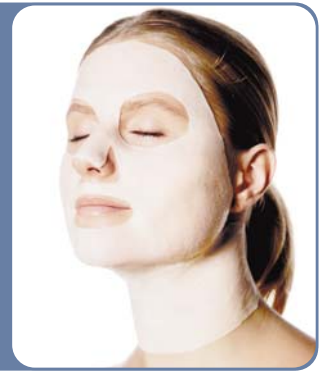
Telephone: + 33 (0)4 78 48 83 76 - Fax: + 33 (0)4 78 48 83 65 - Email: info@sicobel.com

Class 4 = well-being

"SPA" mask

Soothing, anti-wrinkle mask with precious stones

Code 47116Sp



1 General description

Spa" stands for "sanita per aqua", or health through water.

This mask is soaked with an aqueous gel that is full of active ingredients. It moisturizes the skin deep down, soothes it and helps you wind down. A moment of sheer relaxation

An original mask for optimal effect

Non-woven, supple, fine and non adhesive, it fits the face perfectly like a second skin

The base material

The base material is made of a soft white, ultra-supple cellulose derivative of plant origin. It is so safe that it can be used every day, even on the most sensitive areas of skin. Through a film-forming effect, the imperceptible loss of water from the surface layers of the skin is limited, leaving the skin smoothed and moisturized.

The base material can come in various cut-out shapes and be packaged in different types of pouch. (Aluminium, with one transparent side, etc.)

The gel

The gel gives an immediate feeling of freshness, is perfectly absorbed by the skin, and helps the active ingredients to penetrate the skin effectively.

Laboratoire Sicobel innovates with a double-sided mask and presents a dual skincare product: This film-forming mask helps water to stay in the surface layers of the epidermis. Well-wrapped up beneath this protective coat, the skin becomes highly permeable to active substances. It is then able to gorge itself with a large quantity of active ingredients in record time, which is why the results are both visible and immediate.

2 Active ingredients

• Extract of beech tree buds

It has been demonstrated in vitro that extract of beech tree buds increases the consumption of oxygen by the cells, indicating a dynamization of the skin's metabolism, an increase in the intracellular energy reserve and an improvement in moisturization.

• Peptides

This fragment, which might be considered as a "micro-collagen", is a pentapeptide that has an effect on the cells in the dermis, telling them to synthesize the materials required to "fill out" the skin, i.e. the connective tissue made up of proteins (collagen I, III, IV), and polysaccharides (glucosaminoglycans, hyaluronic acid).

• Rhodolite

Aqueous extract of rhodochrosite. This mineral extract has a very high manganese content and is used to protect the fibroblasts against the harmful effects of UV rays.

• Malachite

This aqueous mineral extract derived from malachite has a strong anti-oxidant and detoxifying effect. It provides excellent protection for the skin, while its natural blue colour conjures up images of freshness, minerals and purity.

• Zincite

Aqueous mineral extract of smithsonite, inducing the synthesis of metallothionines. This zinc-rich active ingredient is used to protect the cells against the harmful effects of UVB rays

3 Method of use

Application time:

15 minutes are enough!

The skin immediately receives and gains full benefit from everything it needs to become radiant, supple and soft again. For salon or home use, this original skincare product is consistent with a comfort and well-being approach, providing excellent relaxation and beauty-enhancing time.

Rinsing:

Remove the mask carefully and dab the skin with a toner.

Then apply a skincare cream that acts in synergy with the mask and prolongs its effect for hours

Frequency of use:

choose your programme!

Then apply a skincare cream that acts in synergy with the mask and prolongs its effect for hours

Laboratoire Sicobel – MPP Division

Le Chênerond - 39 RN 7 - 69570 Dardilly - France

Telephone: + 33 (0)4 78 48 83 76 - Fax: + 33 (0)4 78 48 83 65 - Email: info@sicobel.com

Class 5 = eye contour

Moisturizing firming pads

Code 52515Y



1 General description

These pads are soaked with a gel full of active ingredients that moisturize and smooth the eye contour area, giving a brighter and more luminous look

Appropriate shapes for optimal effect!

Non-woven, supple, fine and non adhesive, these pads fit the eye contour area perfectly like a second skin.

The base material

The base material is made of a soft white, ultra-supple cellulose derivative of plant origin. It is so safe that it can be used every day, even on the most sensitive areas of skin. Through a film-forming effect, the imperceptible loss of water from the surface layers of the skin is limited, leaving the skin smoothed and moisturized.

The base material can come in various cut-out shapes and be packaged in different types of pouch. (Aluminium, with one transparent side, etc.)

The gel

The gel gives an immediate feeling of freshness, is perfectly absorbed by the skin, and helps the active ingredients to penetrate the skin effectively.

Laboratoire Sicobel innovates with pads and presents a dual skincare product:

These film-forming pads help water to stay in the surface layers of the epidermis. Well-wrapped up beneath this protective coat, the skin becomes highly permeable to active substances. It is then able to gorge itself with a large quantity of active ingredients in record time, which is why the results are both visible and immediate.

2 Active ingredients

• Glycerol

Glycerol is a molecule derived from the plant kingdom. It is an agent that helps to moisturize the upper layers of the epidermis because it is capable of retaining several times its own weight in water and thus limits the imperceptible loss of water from the epidermis. This active ingredient attaches itself to the surface of the skin to create a soft and lasting moisturizing film. It nourishes and softens the epidermis and makes the skin more beautiful. This ingredient is of natural origin and belongs to the carbohydrate family. It is naturally eliminated by the skin.

The skin is moisturized and seems brighter, more luminous

• Sea collagen

The sea extract used in this mask is a moisturizing and film-forming active ingredient. It is rich in collagen and essential amino acids. In our dermis, there are cells called fibroblasts that specialize in the manufacture of collagen and elastin fibres. Collagen performs a number of functions in the skin; it provides support, elasticity, suppleness and moisturization. Its structure, made up of fibres arranged in bands, is responsible for tissue cohesion and strength.

The sea extract has a strong moisturizing effect on the surface layers of the epidermis and increases skin tone and elasticity.

It provides essential elements which perk the skin up at once, making it bright and radiant.

3 Method of use

Application time:

15 minutes are enough!

The skin immediately receives and gains full benefit from everything it needs to become radiant, supple and soft again. For salon or home use, this original skincare product is consistent with a comfort and well-being approach, providing excellent relaxation and beauty-enhancing time.

Rinsing:

Remove the pads very carefully

Frequency of use:

choose your programme!

As a set programme of treatment with one application a day for a month, or in long-term use, applying once every three days, or once every now and then to perk up the skin.

Laboratoire Sicobel – MPP Division

Le Chênepond - 39 RN 7 - 69570 Dardilly - France

Telephone: + 33 (0)4 78 48 83 76 - Fax: + 33 (0)4 78 48 83 65 - Email: info@sicobel.com

Anti-pouch pads

Code 53790P



1 General description

These pads are soaked with a gel full of active ingredients that boost the microcirculation system and help to eliminate excess fluid. This very gentle draining process helps to reduce pouches beneath the eyes.

What are pouches beneath the eyes?

The skin around the eye is very fine. The pouches that form beneath the eyes may be the consequence of fluid building up in the tissues as the result of poor lymphatic circulation. Alternatively, age and heredity can also be the root causes of slacker skin, with an accumulation of fatty deposits forming these pouches.

The pads come in appropriate shapes for optimal effect!

Non-woven, supple, fine and non adhesive, these pads fit the eye contour area perfectly like a second skin.

The base material

The base material is made of a soft white, ultra-supple cellulose derivative of plant origin. It is so safe that it can be used every day, even on the most sensitive areas of skin. Through a film-forming effect, the imperceptible loss of water from the surface layers of the skin is limited, leaving the skin smoothed and moisturized.

The base material can come in various cut-out shapes and be packaged in different types of pouch. (Aluminium, with one transparent side, etc.)

The gel

The gel gives an immediate feeling of freshness, is perfectly absorbed by the skin, and helps the active ingredients to penetrate the skin effectively.

The phlebotonic and anti-inflammatory active ingredients decongest the skin around the eyes, resulting in a brighter, more wide-awake look.

2 Active ingredients

• Horse Chestnut Extract

This active ingredient has excellent phlebotonic and anti-inflammatory properties, and also helps the body fight against free radicals. It is used for its decongestive, soothing and phlebotonic properties. The aescin and flavonoids in its seeds help to improve the tone and strength of the capillaries.

• Elderberry extract

This active ingredient tackles the problem of water retention and helps the body to eliminate water, toxins and metabolites.

• Ginkgo biloba

Ginkgo Biloba is well-known for its beneficial effect on the blood microcirculation system and for its anti-free radical properties.

3 Method of use

Application time:

5 minutes are enough!

The skin immediately receives and gains full benefit from everything it needs to become radiant, supple and soft again. For salon or home use, this original skincare product is consistent with a comfort and well-being approach, providing excellent relaxation and beauty-enhancing time.

Apply beneath the bottom eyelid, leave for a few minutes and then remove the pads very carefully.

Can be used as a set programme of treatment with one application a day for a month, or in long-term use applying every three days.

To improve the effectiveness of the pads and give an even fresher feeling, they can be placed in a refrigerator for 30 minutes prior to use

Anti-deep wrinkle pads

Code 56114I



1 General description

These pads are soaked with a gel full of active ingredients that moisturize the skin deep down, help to combat free radicals, stimulate cell regeneration and improve skin micro-circulation

The skin around the eye is very fine and the muscles are put under a great deal of strain. The face is constantly exposed to the sun, wind and pollution. This formula targets expression and deep wrinkles.

The base material

The base material is made of a soft white, ultra-supple cellulose derivative of plant origin. It is so safe that it can be used every day, even on the most sensitive areas of skin. Through a film-forming effect, the imperceptible loss of water from the surface layers of the skin is limited, leaving the skin smoothed and moisturized.

The base material can come in various cut-out shapes and be packaged in different types of pouch. (Aluminium, with one transparent side, etc.)

The gel

The gel gives an immediate feeling of freshness, is perfectly absorbed by the skin, and helps the active ingredients to penetrate the skin effectively.

2 Active ingredients

• Glycerin

This natural molecule is an excellent moisturizer and is very kind to the skin.

• Extract of beech tree buds

It has been demonstrated in vitro that extract of beech tree buds increases the consumption of oxygen by the cells, indicating a dynamization of the skin's metabolism and an increase in the intracellular energy reserve. In vivo, tests have highlighted a smoothing effect on the skin's micro-surface structure after 4 weeks of treatment. Extract of beech tree buds also improves moisturization.

• Peptides

With age, less collagen in the dermis seems to be one of the main reasons for wrinkle formation. Stimulating the fibroblasts to encourage them to synthesize more collagen is one of the potential techniques that can help to reduce wrinkles.

The pentapeptide used:

- is a micro-fragment of collagen
- initiates the stimulation of collagen synthesis

This active ingredient fills out the skin and improves its elasticity and tone.

3 Method of use

Application time:

5 minutes are enough!

The skin immediately receives and gains full benefit from everything it needs to become radiant, supple and soft again. For salon or home use, this original skincare product is consistent with a comfort and well-being approach, providing excellent relaxation and beauty-enhancing time.

Apply beneath the bottom eyelid, leave for a few minutes and then remove the pads very carefully.

Can be used as a set programme of treatment with one application a day for a month, or in long-term use applying every three days. To improve the effectiveness of the pads and give an even fresher feeling, they can be placed in a refrigerator for 30 minutes prior to use.

Laboratoire Sicobel – MPP Division

Le Chênerond - 39 RN 7 - 69570 Dardilly - France

Telephone: + 33 (0)4 78 48 83 76 - Fax: + 33 (0)4 78 48 83 65 - Email: info@sicobel.com

Class 5 = eye contour

Invigorating wake-up pads

Code 53790Y



1 General description

These pads are soaked with a gel full of active ingredients that boost the microcirculation system and help to eliminate excess water and toxins. An invigorating wake-up call for your eyes!

Appropriate shapes for optimal effect!

Non-woven, supple, fine and non adhesive, these pads fit the eye contour area perfectly like a second skin.

The base material

The base material is made of a soft white, ultra-supple cellulose derivative of plant origin. It is so safe that it can be used every day, even on the most sensitive areas of skin. Through a film-forming effect, the imperceptible loss of water from the surface layers of the skin is limited, leaving the skin smoothed and moisturized.

The base material can come in various cut-out shapes and be packaged in different types of pouch. (Aluminium, with one transparent side, etc.)

The gel

The gel gives an immediate feeling of freshness, is perfectly absorbed by the skin, and helps the active ingredients to penetrate the skin effectively.

The phlebotonic and anti-inflammatory active ingredients decongest the skin around the eyes, resulting in a brighter, more wide-awake look

2 Active ingredients

• Elderberry extract

This active ingredient tackles the problem of water retention and helps the body to eliminate water, toxins and metabolites

• Ginkgo biloba

Ginkgo Biloba is well-known for its beneficial effect on the blood microcirculation system and for its anti-free radical properties.

• Horse chestnut extract

This active ingredient has excellent phlebotonic and anti-inflammatory properties, and also helps the body fight against free radicals. It is used for its decongestive, soothing and phlebotonic properties. The aescin and flavonoids in its seeds help to improve the tone and strength of the capillaries.

3 Method of use

Application time:

5 minutes are enough!

The skin immediately receives and gains full benefit from everything it needs to become radiant, supple and soft again. For salon or home use, this original skincare product is consistent with a comfort and well-being approach, providing excellent relaxation and beauty-enhancing time.

Apply beneath the bottom eyelid, leave for a few minutes and then remove the pads very carefully.

Use in the morning after a short night, or during periods of over-tiredness.

Can also be used as a set programme of treatment with one application a day for a month, or in long-term use applying every three days. To improve the effectiveness of the pads and give an even fresher feeling, they can be placed in a refrigerator for 30 minutes prior to use.

Laboratoire Sicobel – MPP Division

Le Chênerond - 39 RN 7 - 69570 Dardilly - France

Telephone: + 33 (0)4 78 48 83 76 - Fax: + 33 (0)4 78 48 83 65 - Email: info@sicobel.com

Lightening Pads

Code 55133W



1 General description

Lightening pads are more specifically targeted at Asian or black skins who would like to give an occasional lighter, brighter radiance to their skin, and to combat pigment spots.

Appropriate shapes for optimal effect!

Non-woven, supple, fine and non adhesive, these pads fit the eye contour area perfectly like a second skin.

The base material

The base material is made of a soft white, ultra-supple cellulose derivative of plant origin. It is so safe that it can be used every day, even on the most sensitive areas of skin. Through a film-forming effect, the imperceptible loss of water from the surface layers of the skin is limited, leaving the skin smoothed and moisturized.

The base material can come in various cut-out shapes and be packaged in different types of pouch. (Aluminium, with one transparent side, etc.)

The gel

The gel gives an immediate feeling of freshness, is perfectly absorbed by the skin, and helps the active ingredients to penetrate the skin effectively.

Laboratoire Sicobel innovates with pads and presents a dual skincare product:

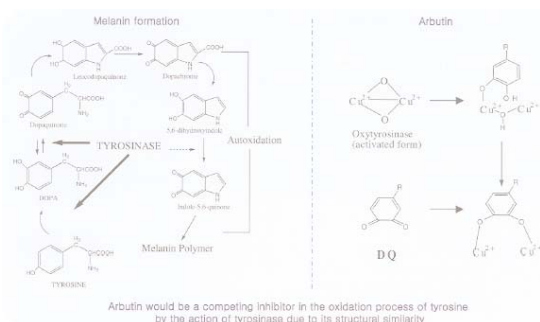
These film-forming pads help water to stay in the surface layers of the epidermis. Well-wrapped up beneath this protective coat, the skin becomes highly permeable to active substances. It is then able to gorge itself with a large quantity of active ingredients in record time, which is why the results are both visible and immediate.

2 Active ingredients

• Arbutin

This active ingredient is obtained from the aerial parts of the Bearberry (*arctophylos uva ursi*) by aqueous extraction, fractional recrystallization and filtering through activated carbon.

Arbutin is intended to treat pigment spots and to lighten the skin, as it has a strong inhibiting effect on the action of tyrosinase.



3 Method of use

Application time:

5 minutes are enough!

The skin immediately receives and gains full benefit from everything it needs to become radiant, supple and soft again. For salon or home use, this original skincare product is consistent with a comfort and well-being approach, providing excellent relaxation and beauty-enhancing time.

Apply beneath the bottom eyelid, leave for a few minutes and then remove the pads very carefully.

Can be used as a set programme of treatment with one application a day for a month, or in long-term use applying every three days.

Laboratoire Sicobel – MPP Division

Le Chênepond - 39 RN 7 - 69570 Dardilly - France

Telephone: + 33 (0)4 78 48 83 76 - Fax: + 33 (0)4 78 48 83 65 - Email: info@sicobel.com

Class 5 = eye contour skincare

Anti-expression wrinkle pads

Code 56946E



1 General description

These pads are soaked with a gel full of active ingredients that specifically target expression wrinkles. The eye contour area is smoother, soothed and no longer tense..

What are expression wrinkles?

They are wrinkles that form on areas where the face muscles are put under a great deal of strain.

The eyes, which express every single one of our emotions, are surrounded by tiny, but very important muscles. Crows' feet are often the very first wrinkles to appear.

Original shapes for optimal effect!

Non-woven, supple, fine and non adhesive, these pads fit the eye contour area perfectly like a second skin.

The base material

The base material is made of a soft white, ultra-supple cellulose derivative of plant origin. It is so safe that it can be used every day, even on the most sensitive areas of skin. Through a film-forming effect, the imperceptible loss of water from the surface layers of the skin is limited, leaving the skin smoothed and moisturized.

The base material can come in various cut-out shapes and be packaged in different types of pouch. (Aluminium, with one transparent side, etc.)

The gel

The gel gives an immediate feeling of freshness, is perfectly absorbed by the skin, and helps the active ingredients to penetrate the skin effectively.

2 Active ingredients

• Algae extract

Algae extract acts at 2 levels. Firstly, it acts on cell relaxation – it is "skin-relaxing" – and therefore has a direct effect on expression wrinkles by acting on the nerve-muscle connection. Secondly, it acts on the rebuilding and cohesion of the components in the extracellular matrix; which by increasing the synthesis of collagen has the effect of filling out the skin.

• Extract of sea collagen

An active ingredient that moisturizes the outer layers of the skin. Film-forming. It promotes skin elasticity, tone and regeneration.

• Skin-relaxing peptide

This hexapeptide has an anti-wrinkle function. Its action is said to be "skin-relaxing"; it acts on the skin by inhibiting the passage of the information telling the muscles to contract, the effect of which is to limit expression wrinkles.

• Extract of beech tree buds

This active ingredient stimulates cellular respiration

3 Method of use

Application time:

5 minutes are enough!

The skin immediately receives and gains full benefit from everything it needs to become radiant, supple and soft again. For salon or home use, this original skincare product is consistent with a comfort and well-being approach, providing excellent relaxation and beauty-enhancing time. Apply beneath the bottom eyelid, leave for a few minutes and then remove the pads very carefully. Can be used as a set programme of treatment with one application a day for a month, or in long-term use applying every three days. To improve the effectiveness of the pads and give an even fresher feeling, they can be placed in a refrigerator for 30 minutes prior to use

Laboratoire Sicobel – MPP Division

Le Chênerond - 39 RN 7 - 69570 Dardilly - France

Telephone: + 33 (0)4 78 48 83 76 - Fax: + 33 (0)4 78 48 83 65 - Email: info@sicobel.com